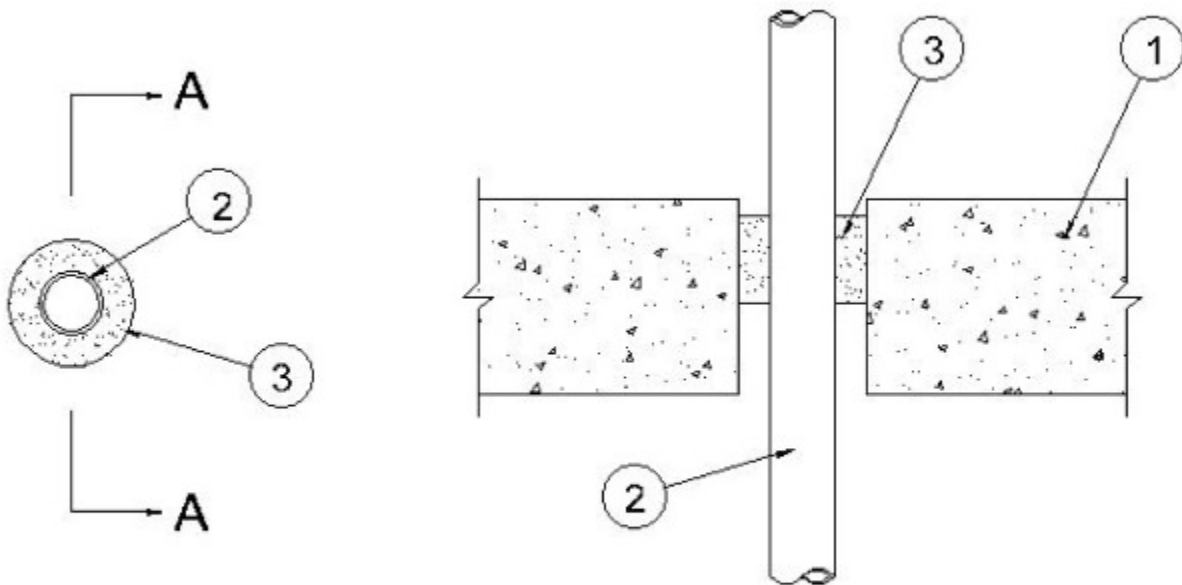


System No. C-AJ-1559

February 14, 2007

F Rating — 3 Hr

T Rating — 3/4 Hr



SECTION A-A

1. **Floor or Wall Assembly** — Min 4-1/2 in. (114 mm) thick reinforced lightweight or normal weight (100-150 pcf (1600-2400 kg/m³)) structural concrete. Floor may also be constructed of any min 6 in. (152 mm) thick UL Classified hollow-core **Precast Concrete Units***. Wall may also be constructed of any UL Classified **Concrete Blocks***. Max diam of opening is 3 in. (76 mm).

See **Precast Concrete Units** (CFTV) and **Concrete Block** (CAZT) categories in the Fire Resistance Directory for names of manufacturers.

2. **Through Penetrants** — One metallic pipe, conduit or tubing to be installed within the firestop system. The annular space shall be min 3/8 in. (10 mm) to max 3/4 in. (19 mm). Pipe, conduit or tubing to be rigidly supported on both sides of floor or wall assembly. The following types and sizes of metallic pipes, conduits or tubing may be used:

- A. **Steel Pipe** — Nom 1-1/2 in. (38 mm) diam (or smaller) Schedule 10 (or heavier) steel pipe.
- B. **Conduit** — Nom 1-1/2 in. (38 mm) diam (or smaller) steel electrical metallic tubing or rigid steel conduit.

3. Fill, Void or Cavity Material* - Putty — Min 2 in. (51 mm) thickness of fill material applied within the annulus, recessed 1/4 to 3/8 in. (6 to 10 mm) from top surface of floor or both surfaces of wall. In floors constructed of hollow-core precast concrete units, fill material to be installed flush with both surfaces of assembly.

A/D FIRE PROTECTION SYSTEMS INC — A/D FIREBARRIER Putty II

*Bearing the UL Classification Mark